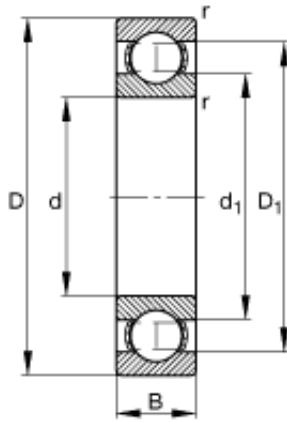




## Double BALL BEARINGS CO, LTD



15 mm x 35 mm x 11 mm FAG 6202 deep groove ball bearings

Bearing No. 6202

Size	15x35x11 mm
Bore Diameter	15 mm
Outer Diameter	35 mm
Width	11 mm
d	15 mm
D	35 mm
B	11 mm
$D_1$	29,3 mm
$D_{a \max}$	30,8 mm
$d_1$	21,1 mm
$d_{a \min}$	19,2 mm
$r_{a \max}$	0,6 mm
$r_{\min}$	0,6 mm
m	0,043 kg / Weight
$C_r$	8200 N / Dynamic load rating (radial)
$C_{0r}$	3750 N / Static load rating (radial)
$n_G$	30000 1/min / Limiting speed
$n_B$	20200 1/min / Reference speed
$C_{ur}$	197 N / Fatigue limit load, radial

6202 Bearing 2D drawings and 3D CAD models