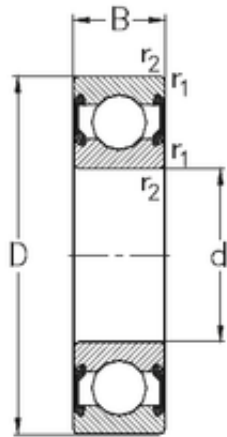




## Double BALL BEARINGS CO, LTD



17 mm x 35 mm x 10 mm NKE 6003-2RS2 deep groove ball bearings

Bearing No. 6003-2RS2

Size	17x35x10 mm
Bore Diameter	17 mm
Outer Diameter	35 mm
Width	10 mm
d	17 mm
D	35 mm
B	10 mm
C	10 mm
r1 min.	0,3 mm
r2 min.	0,3 mm
Weight	0,037 Kg
Basic dynamic load rating (C)	6 kN
Basic static load rating (C0)	3,3 kN

6003-2RS2 Bearing 2D drawings and 3D CAD models