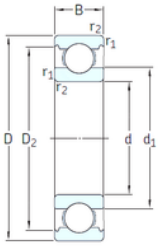




Double BALL BEARINGS CO, LTD



VA201



2Z/VA201



2Z/VA208



2Z/VA228

35 mm x 72 mm x 17 mm SKF 6207-2Z/VA201 deep groove ball bearings

Bearing No. 6207-2Z/VA201

6207-2Z/VA201 Bearing 2D drawings and 3D CAD models

Size	35x72x17 mm
Bore Diameter	35 mm
Outer Diameter	72 mm
Width	17 mm
d	35 mm
D	72 mm
B	17 mm
C	17 mm
d1	46,9 mm
r1 min.	1,1 mm
r2 min.	1,1 mm
D2	62,7 mm
Weight	0,29 Kg
Temperature -	30 to +250 °
Basic static load rating (C0)	15,3 kN
Category	Single Row Ball Bearings
Inventory	0.0
Manufacturer Name	SKF
Minimum Buy Quantity	N/A
Weight / Kilogram	0.302
EAN	7316571587974
Product Group	B00308
Enclosure	2 Metal Shields
Precision Class	ABEC 1 ISO P0
Maximum Capacity / Filling Slot	No



Double BALL BEARINGS CO, LTD

Rolling Element	Ball Bearing
Snap Ring	No
Internal Special Features	Polyalkylene Glycol/Graphite Mixture Filled
Cage Material	Steel
Internal Clearance	C0-Medium
Inch - Metric	Metric
Long Description	35MM Bore; 72MM Outside Diameter; 17MM Outer Race Width; 2 Metal Shields; Ball Bearing; ABEC 1 ISO P0; No Filling Slot; No Snap Ring; Polyalkylene Glycol/Graphite Mixture Filled Internal Special Fea
Other Features	Deep Groove Extreme Temperature Variant
Category	Single Row Ball Bearing
UNSPSC	31171504
Harmonized Tariff Code	8482.10.50.68
Noun	Bearing
Keyword String	Ball
Manufacturer URL	http://www.skf.com
Manufacturer Item Number	6207-2Z/VA201
Weight / LBS	0.3
Inner Race Width	0 Inch 0 Millimeter
Outer Race Width	0.669 Inch 17 Millimeter
Outside Diameter	2.835 Inch 72 Millimeter
Bore	1.378 Inch 35 Millimeter
bore diameter:	35 mm
precision rating:	Not Rated
outside diameter:	72 mm
finish/coating:	Uncoated
overall width:	17 mm



Double BALL BEARINGS CO, LTD

cage material:	Steel
bore type:	Round
outer ring width:	17 mm
closure type:	Double Shielded
fillet radius:	1.1 mm
row type & fill slot:	Single Row Non-Fill Slot
maximum rpm:	160 RPM
internal clearance:	C0
series:	62
operating temperature range:	-20 to +480 ° F
resistance features:	Corrosion Resistant, Extreme Temperature
static load capacity:	15.3 kN
d_1	46.94 mm
D_2	62.69 mm
$r_{1,2}$ min.	1.1 mm
d_a min.	42 mm
d_a max.	46.8 mm
D_a max.	65 mm
r_a max.	1 mm
Basic dynamic load rating C	27 kN
Basic static load rating C_0	15.3 kN
Limiting speed	80 r/min
Limiting temperature T max.	250 ° C
Mass bearing	0.3 kg